



KLEVV NVMe M.2 SSD

INSTALLATION GUIDE

I Contents

Overview

Before You Begin

SSD Handling Precautions

Desktop Installation

Laptop Installation

Warranty and Technical Support

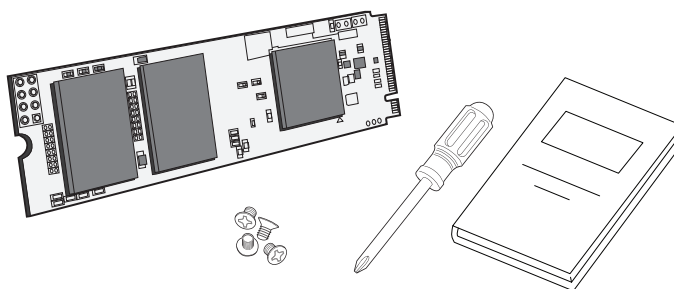
Overview

This guide explains how to install KLEVV NVMe M.2 SSDs in desktop and laptop computers.

Before You Begin

Before starting, make sure you have the following items ready:

- KLEVV NVMe M.2 SSD
- Screwdriver
- Your computer's user manual
- Mounting screws (if required)



SSD Handling Precautions

To ensure safe installation and avoid damage, please follow these guidelines when handling KLEVV NVMe M.2 SSDs:

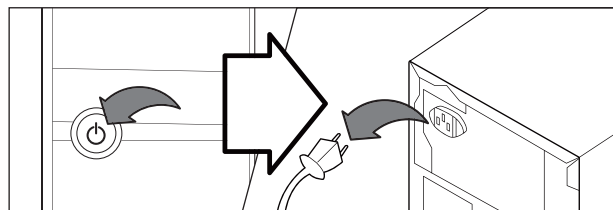
- **Avoid static electricity**
Before touching the SSD, discharge static electricity from your body by touching a grounded metal object such as the computer case. Using an anti-static wrist strap is recommended.
- **Handle with care**
Always hold the SSD by its edges. Do not touch the gold connectors.
- **Do not bend the SSD**
Avoid bending the SSD, especially when inserting it into the slot or pressing it down.
- **Do not disassemble**
Do not remove the encasement, labels, or attempt to disassemble the SSD. Such actions may damage the drive and void the warranty.
- **Keep away from liquids and dust**
Ensure the workspace is clean and dry. Even small particles or moisture may cause damage.

Desktop Installation

Follow these steps to install a KLEVV NVMe M.2 SSD into a desktop computer:

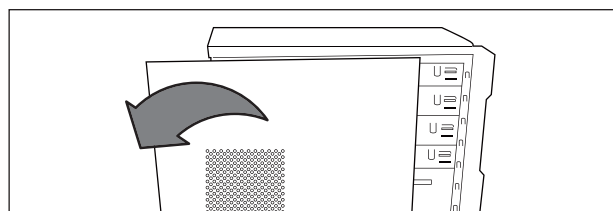
Step 1. Power off and unplug

Turn off your computer and disconnect the power cable. Press the power button once after unplugging to release any remaining electricity.



Step 2. Open the case

Use a screwdriver to remove the screws, then carefully take off the side panel of your desktop case.



Step 3. Locate the M.2 slot

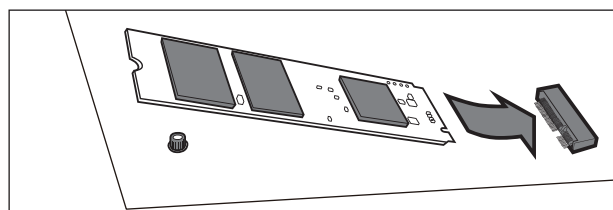
Find the NVMe M.2 socket on your motherboard. Refer to your computer's or motherboard's user manual for the exact location.

Step 4. Remove the existing SSD (if applicable)

If another M.2 SSD is already installed, carefully remove it according to the instructions in your user manual.

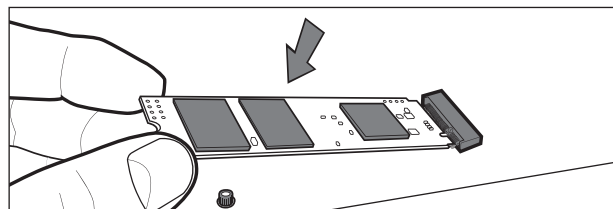
Step 5. Insert the new SSD

Hold the KLEVV NVMe M.2 SSD by its edges. Align the notch on the connector with the key in the M.2 slot, then insert the SSD at about a 30-degree angle.



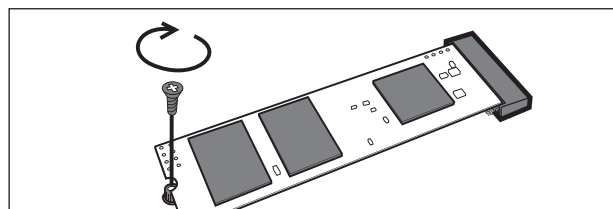
Step 6. Lower the SSD into place

Gently press the SSD down so it rests on the motherboard.



Step 7. Secure the SSD

Insert the mounting screw and tighten it to hold the SSD firmly in place.



Step 8. Close the case

Reattach the side panel and secure it with screws.

Step 9. Power on and check

Reconnect the power cable, start your computer, and check the BIOS or operating system to confirm that the new SSD has been recognized.

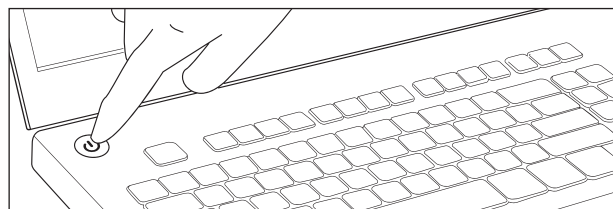
*Note: If you are installing the SSD as a system drive, you may need to change the boot order in the BIOS to boot from the new SSD.

Laptop Installation

Follow these steps to install a KLEVV NVMe M.2 SSD into a laptop computer:

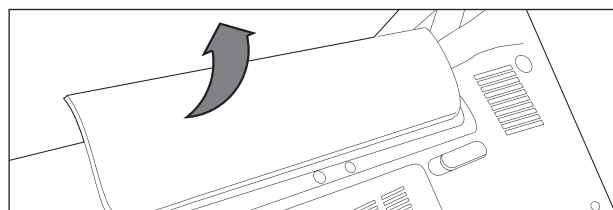
Step 1. Power off and unplug

Turn off your laptop completely, unplug the power adapter, and remove the battery if it is detachable.



Step 2. Open the back cover

Use a screwdriver to remove the screws and carefully take off the bottom panel of your laptop. Refer to your laptop's user manual for detailed instructions.

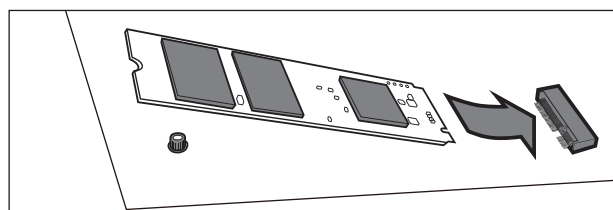


Step 3. Remove the existing SSD (if applicable)

If another M.2 SSD is already installed, carefully remove it according to the instructions in your user manual.

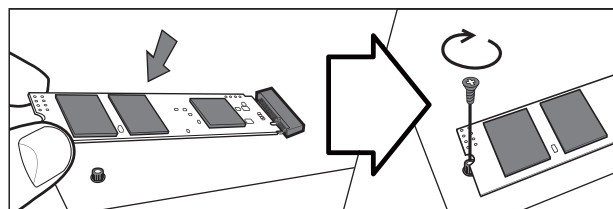
Step 4. Insert the new SSD

Hold the KLEVV NVMe M.2 SSD by its edges. Align the notch on the connector with the key in the M.2 slot, then insert the SSD at about a 30-degree angle.



Step 5. Lower and secure the SSD

Gently press the SSD downward until it rests on the motherboard. Insert the mounting screw and tighten it to secure the SSD in place.



Step 6. Reassemble the laptop

Reattach the back cover and secure it with screws.

Step 7. Power on and check

Plug in the power adapter, start your laptop, and check the BIOS or operating system to confirm that the new SSD has been recognized. (image)

*Note: If you are installing the SSD as a system drive, you may need to change the boot order in the BIOS to boot from the new SSD.

Warranty and Technical Support

For warranty details and technical support, please visit the KLEVV support page:
www.klevv.com/ken/support/contact

